

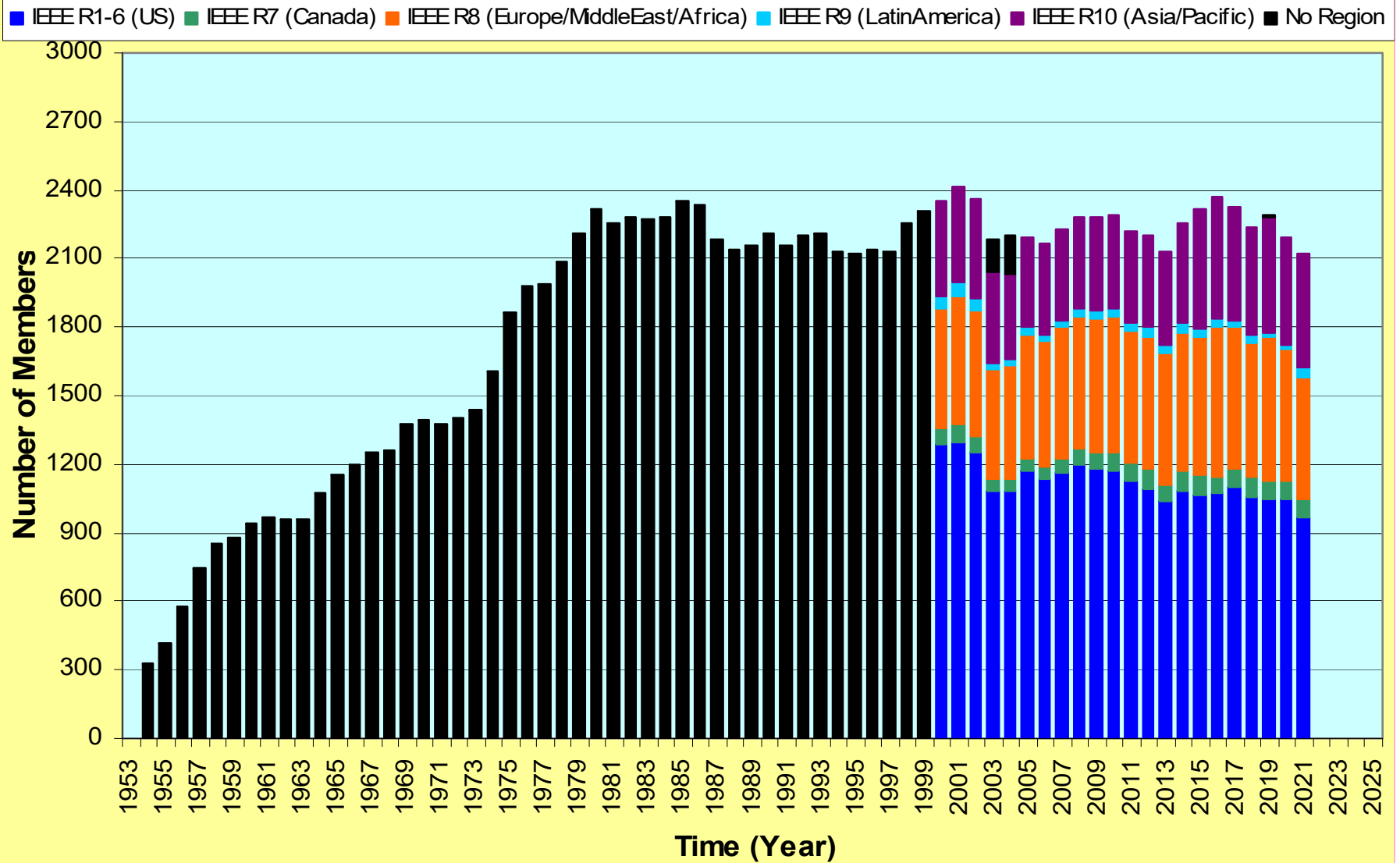
Historical Membership Data **Since 1953** of IEEE Ultrasonics, Ferroelectrics, and Frequency Control Society (**UFFC-S**)

Note: A Microsoft Excel version of these plots for details of the data is accessible at:
https://ewh.ieee.org/conf/ius_2008/z_doc_misc/0_0_0_oper_uffc_membership_plots.xls

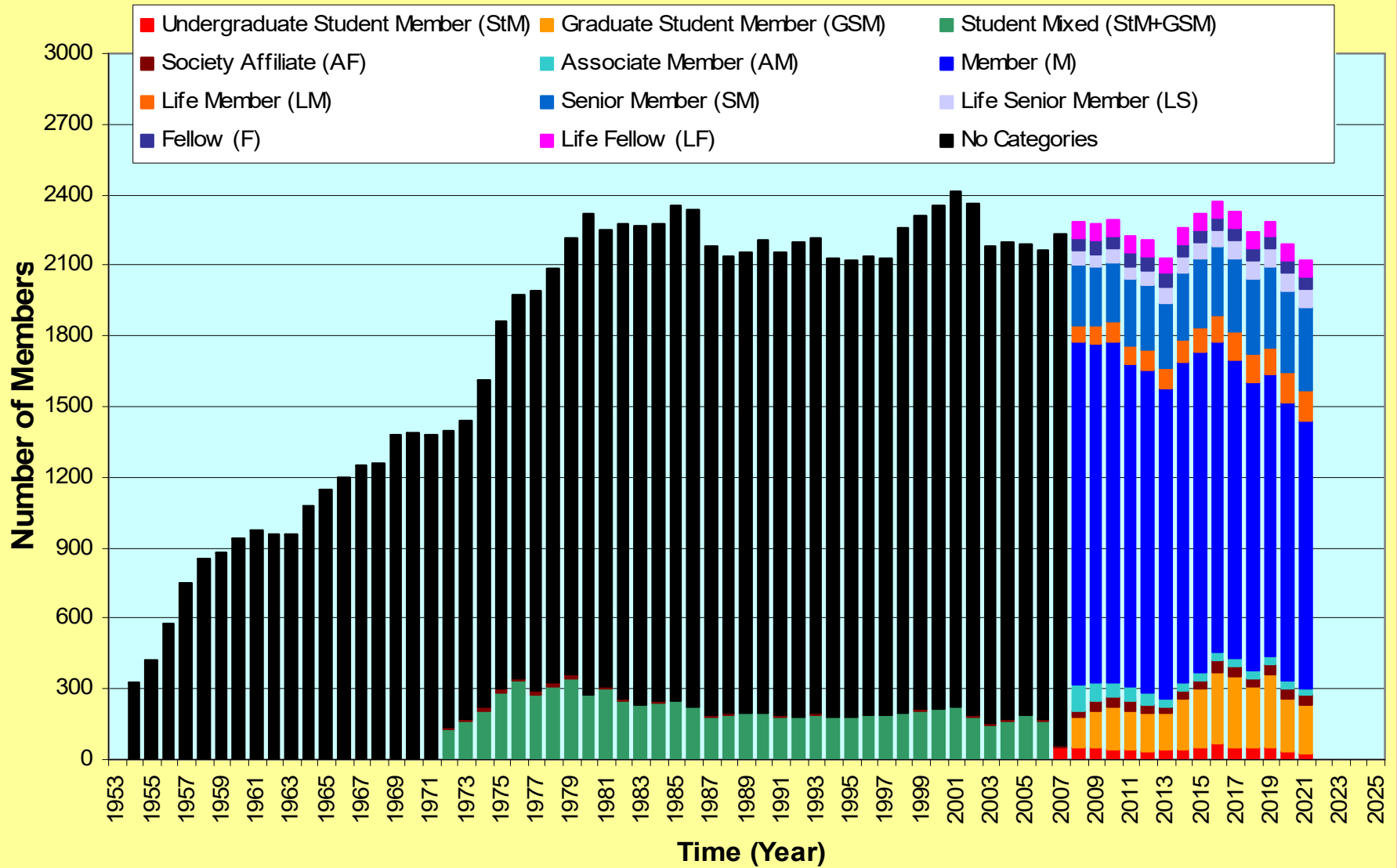
Notes

- 1) UFFC-S started in 1953.
- 2) The data from 1954 – 1971 were estimated from the chart published in Fig. 2 on Page 78 of the IEEE UFFC-S Newsletters, Fall 2004 issue.
- 3) IEEE reporting data only goes back to 1972.
- 4) The breakout by the 10 Grade categories started in 2008. Prior to 2008, data was only broken out by Affiliate, Student, and Higher Grade.
- 5) IEEE Region data were not available prior to 2000.
- 6) Before 2007, the Student Member category include both undergraduate (StM) and graduate (GSM) students. On 2007, GSM data was not available.
- 7) Women Members from 2009-2012 was from the year-end Women Members table in the Annual Statistics (Table D4). The count was not broken out by Men, Women, Unspecified in those 4 years.

of Members of the IEEE Ultrasonics, Ferroelectrics, and Frequency Control Society (UFFC-S) by IEEE Regions (Since 1953) - "0" values mean that data are not available for those years

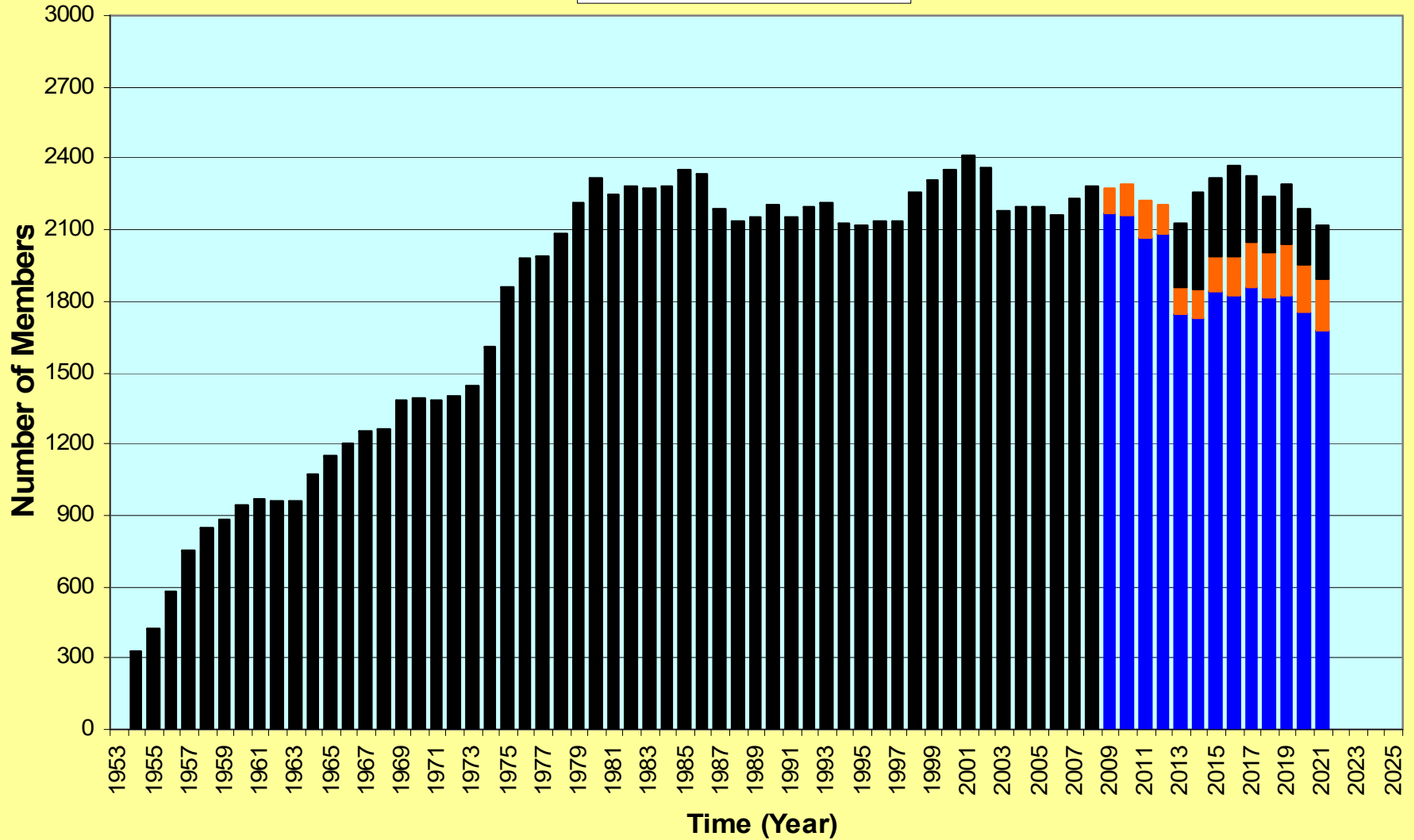


of Members of the IEEE Ultrasonics, Ferroelectrics, and Frequency Control Society (UFFC-S) by Grade Categories (Since 1953) - "0" values mean that data are not available for those years



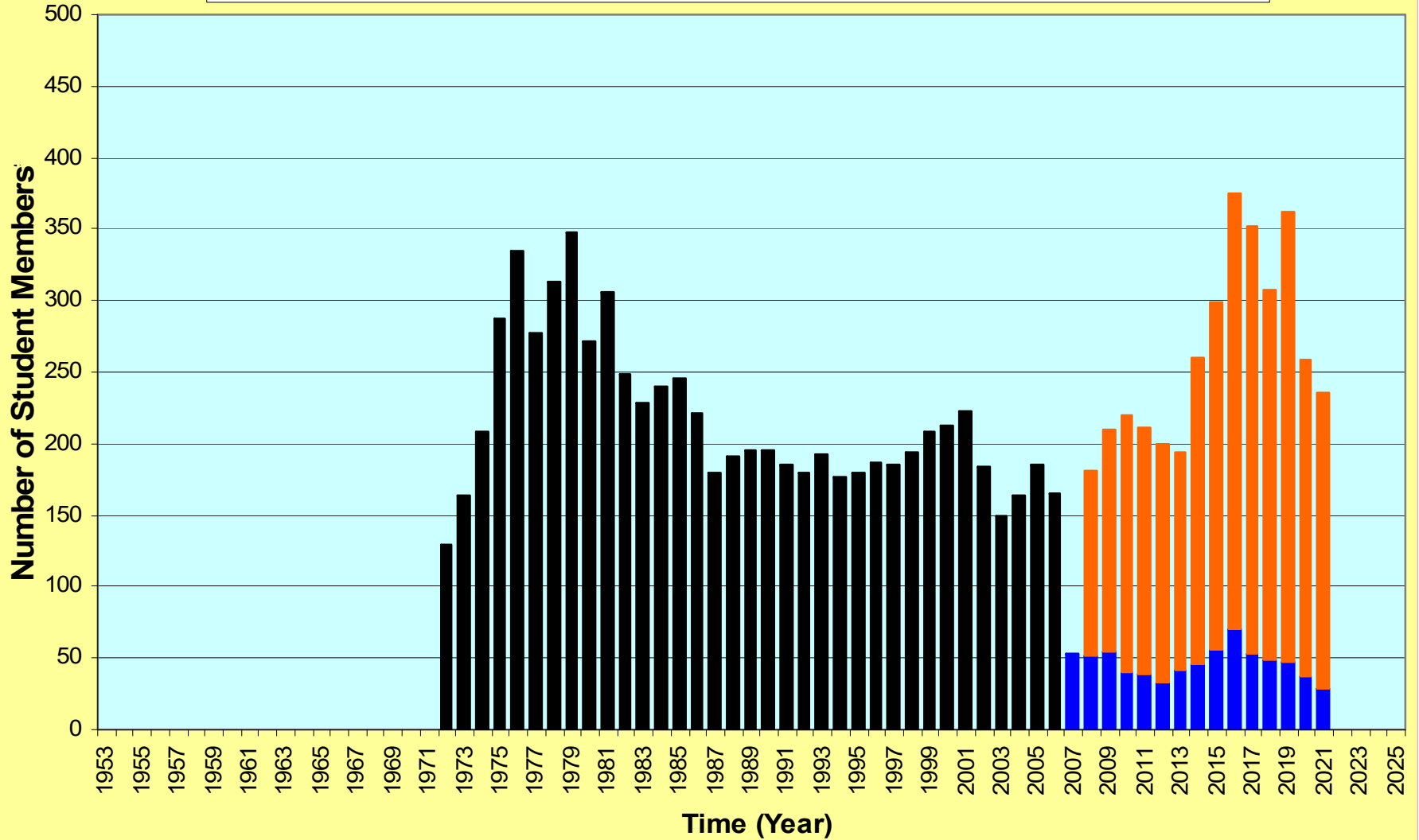
of Members of the IEEE Ultrasonics, Ferroelectrics, and Frequency Control Society (UFFC-S) by Genders (Since 1953) - "0" values mean that data are not available for those years

Male Female Unspecified



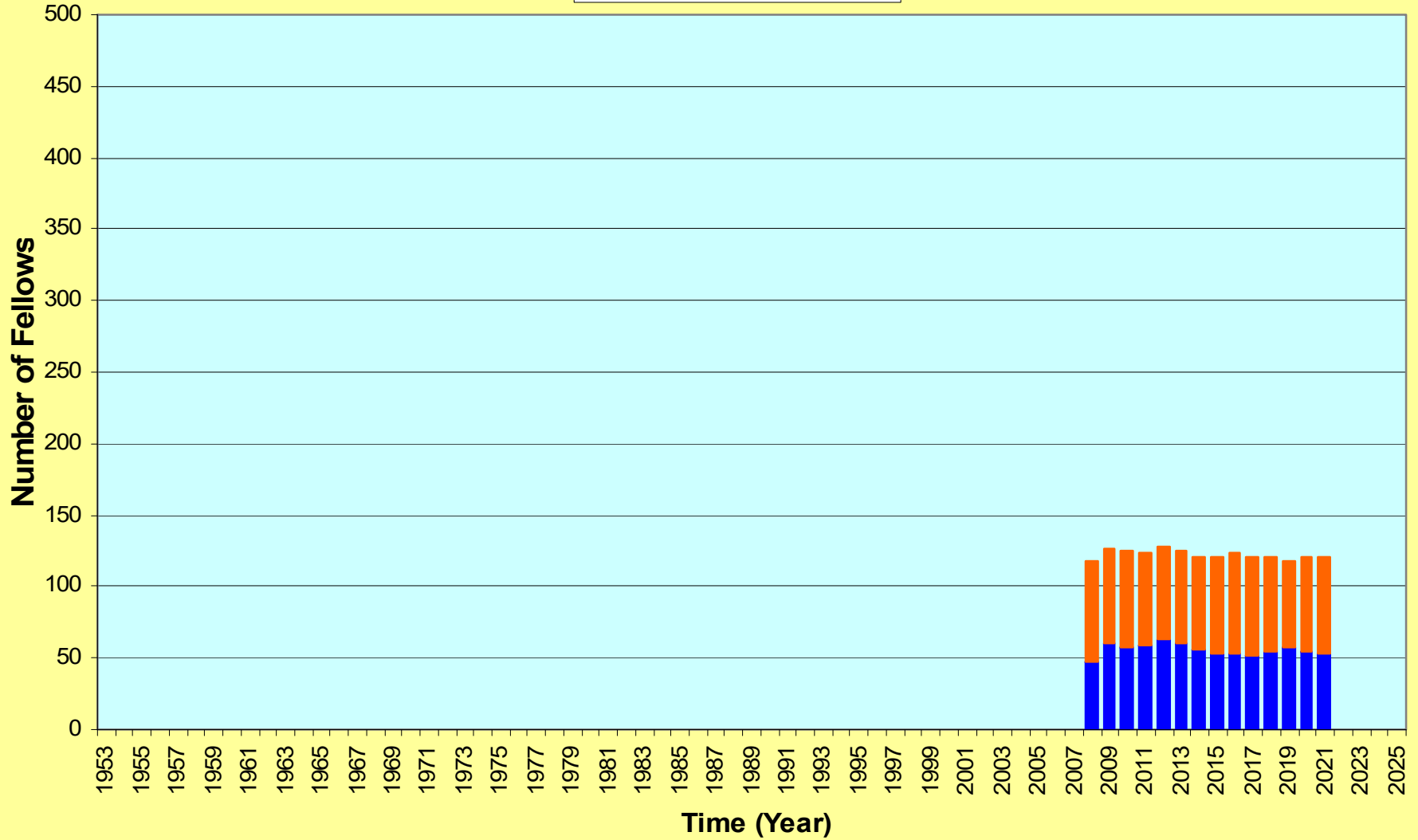
of Student Mmembers of the IEEE Ultrasonics, Ferroelectrics, and Frequency Control Society (UFFC-S) (Since 1953) - "0" values mean that data are not available for those years

■ Undergraduate Student Member (StM) ■ Graduate Student Member (GSM) ■ Student Mixed (StM+GSM)



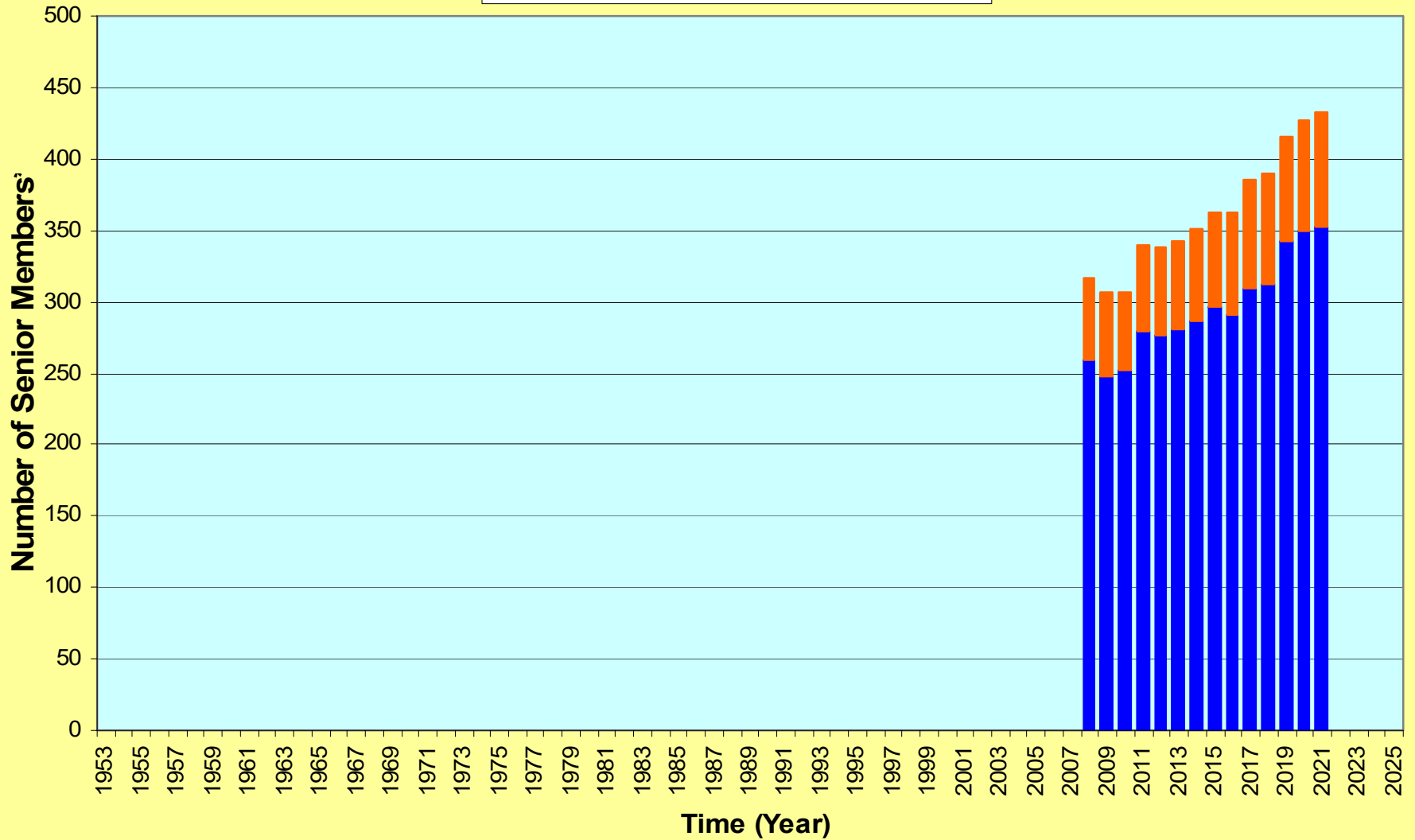
of Fellows of the IEEE Ultrasonics, Ferroelectrics, and Frequency Control Society (UFFC-S) (Since 1953) - "0" values mean that data are not available for those years

■ Fellow (F) ■ Life Fellow (LF)

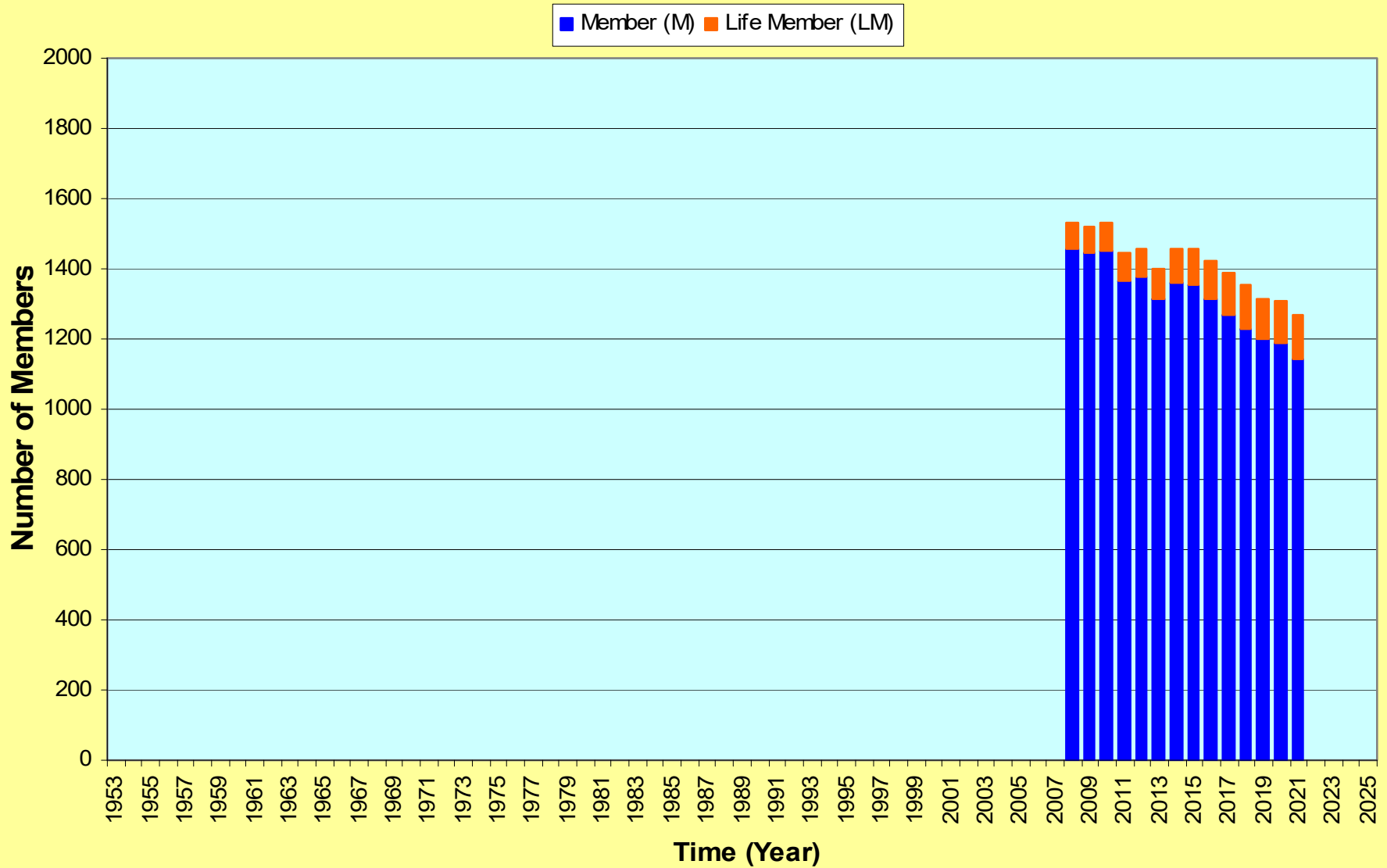


of Senior Members of the IEEE Ultrasonics, Ferroelectrics, and Frequency Control Society (UFFC-S) (Since 1953) - "0" values mean that data are not available for those years

■ Senior Member (SM) ■ Life Senior Member (LS)

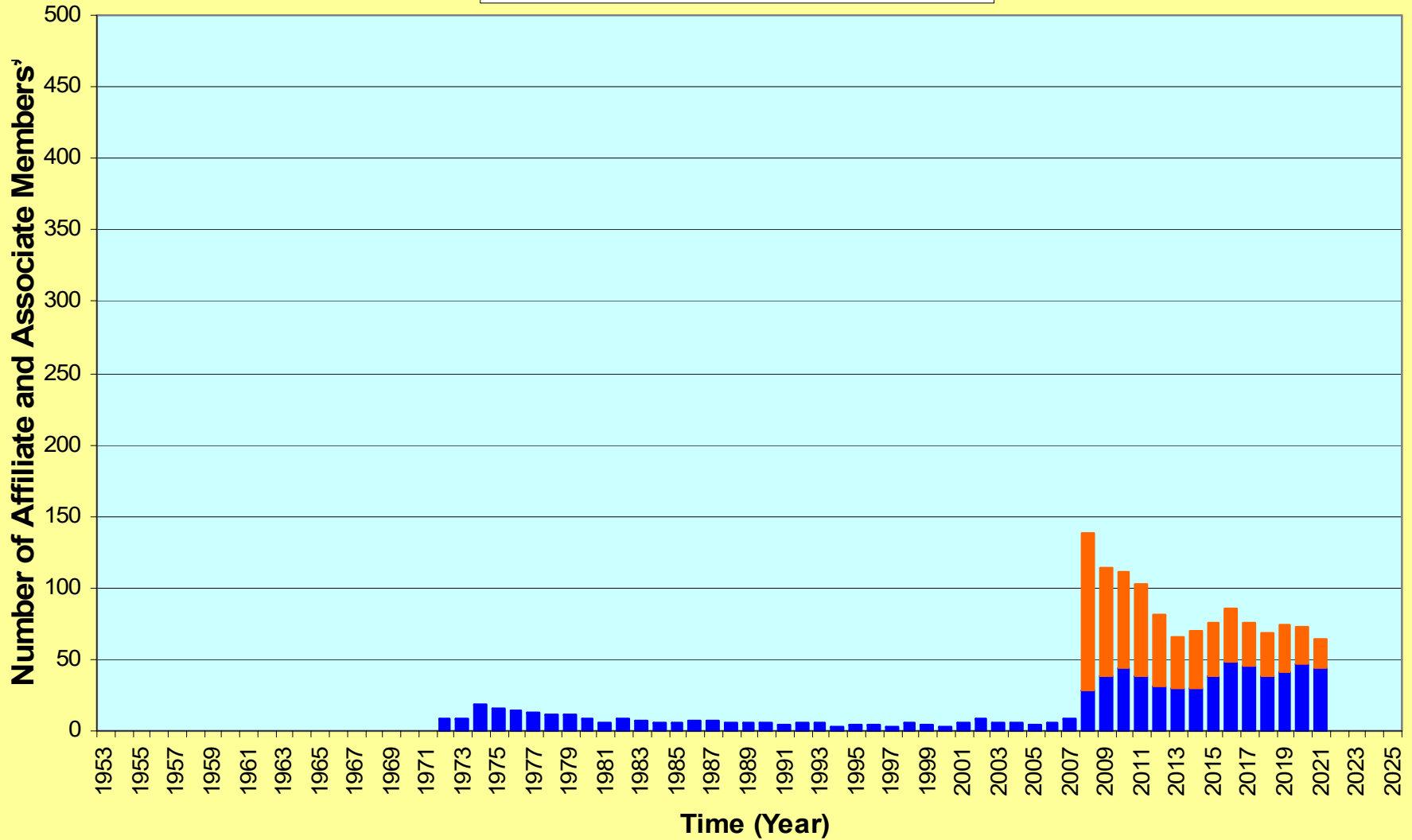


of Members of the IEEE Ultrasonics, Ferroelectrics, and Frequency Control Society (UFFC-S) (Since 1953) - "0" values mean that data are not available for those years



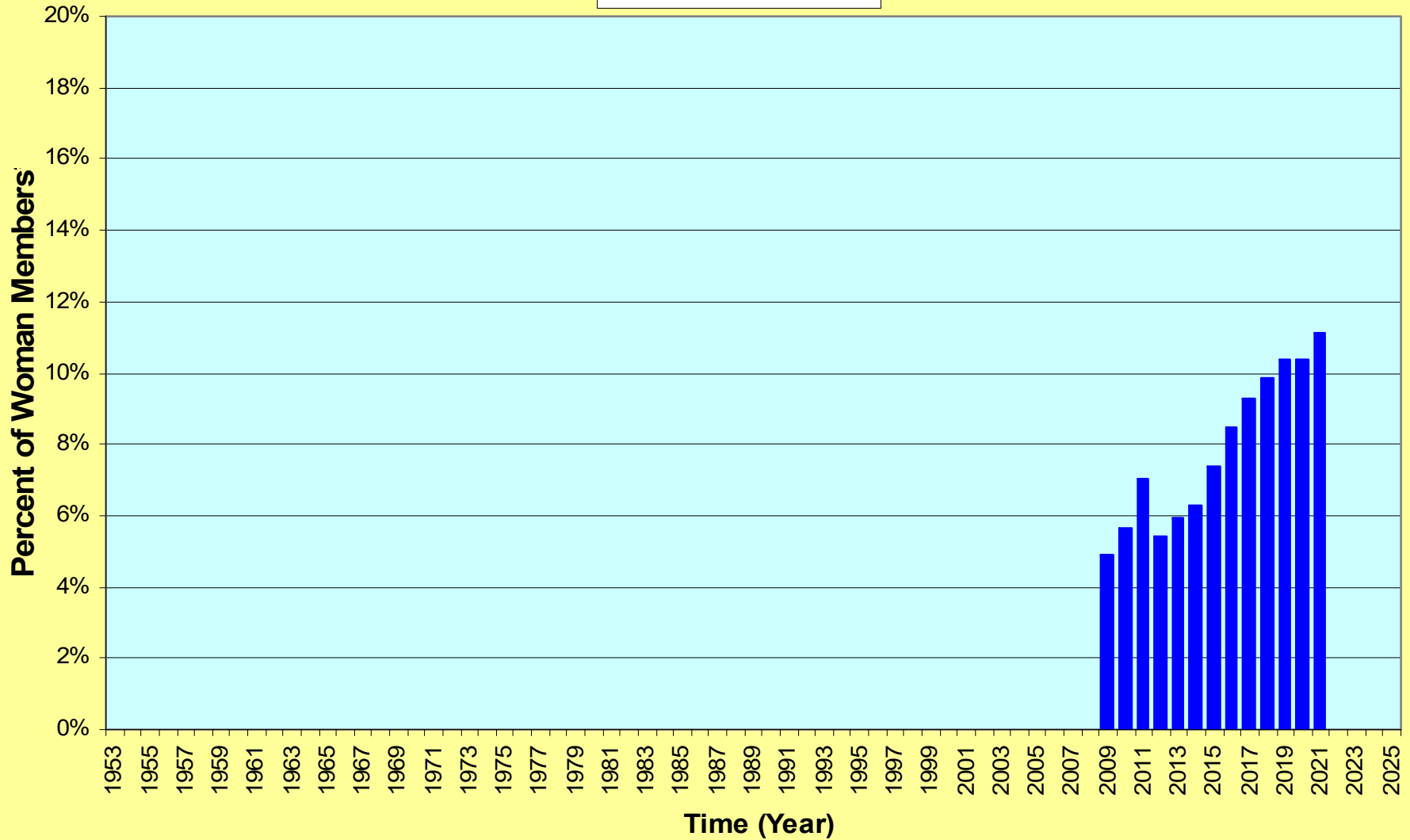
of Affiliate and Associate Members of the IEEE Ultrasonics, Ferroelectrics, and Frequency Control Society (UFFC-S) (Since 1953) - "0" values mean that data are not available for those years

■ Society Affiliate (AF) ■ Associate Member (AM)



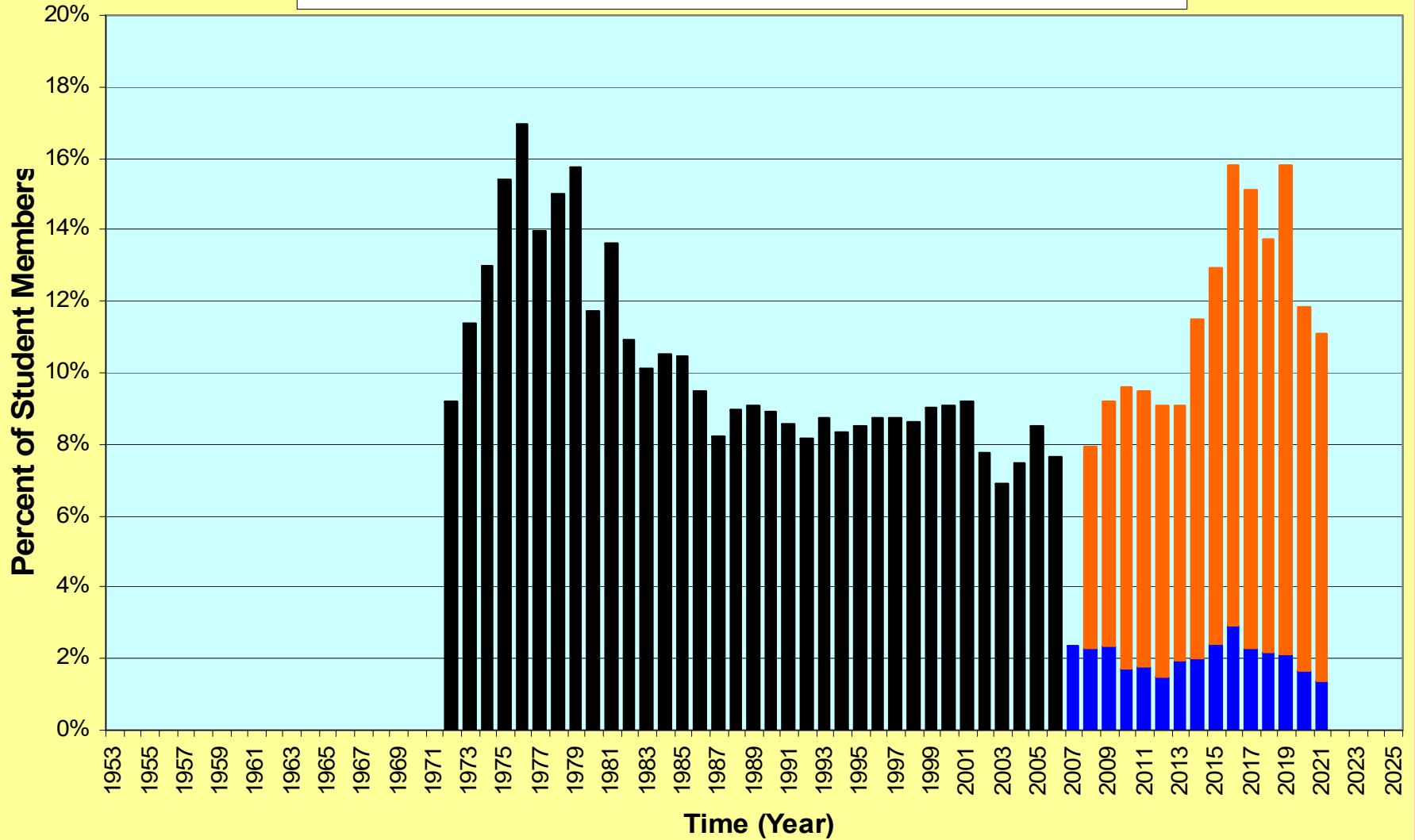
Percent of Woman Members of the IEEE Ultrasonics, Ferroelectrics, and Frequency Control Society (UFFC-S) (Since 1953) - "0" values mean that data are not available for those years

■ Female / (Male + Female)



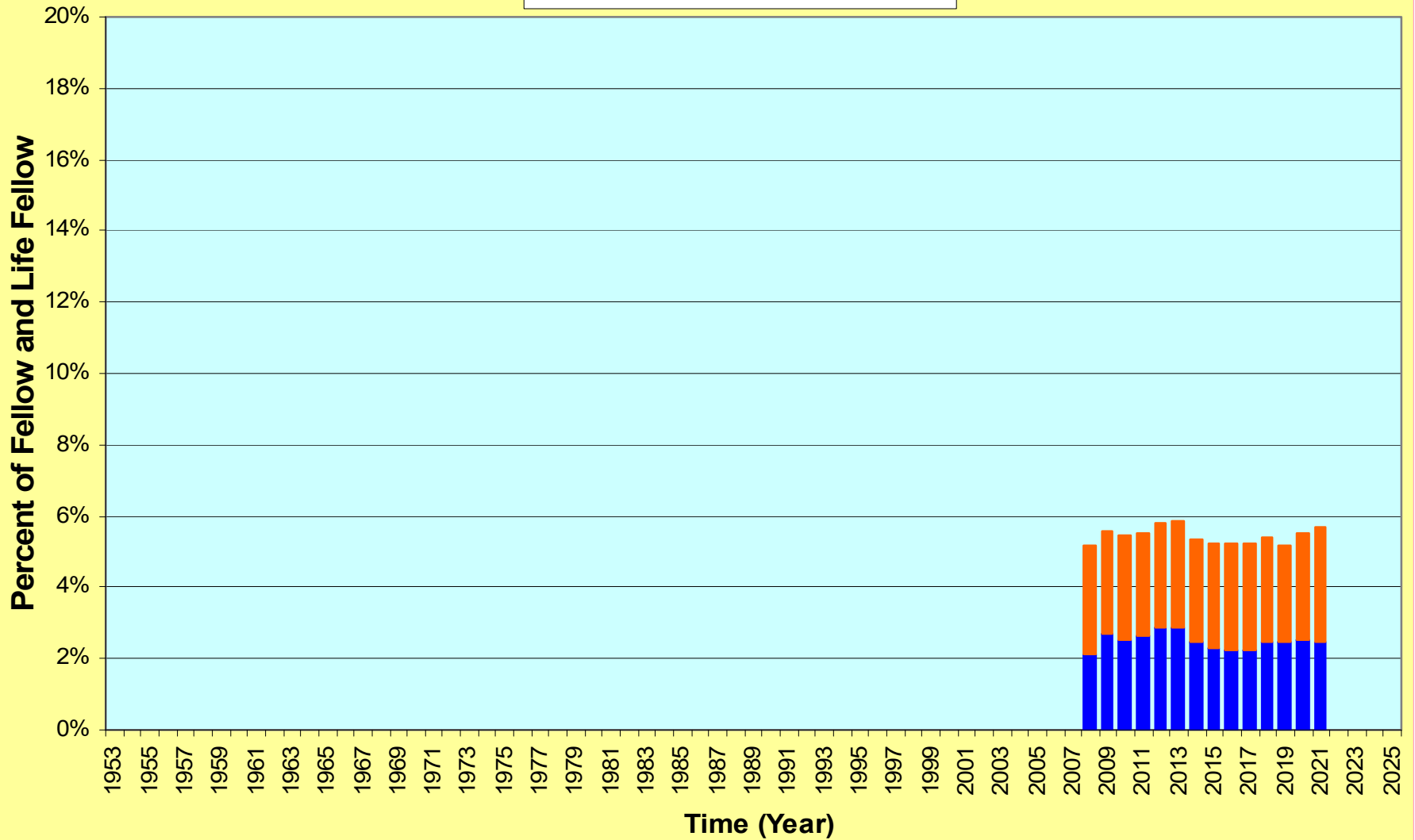
Percent of Student Members / Total UFFC-S Members of the IEEE Ultrasonics, Ferroelectrics, and Frequency Control Society (UFFC-S) (Since 1953) - "0" values mean that data are not available for those years

■ Undergraduate (StM/Total) ■ Graduate (GSM/Total) ■ Student Mixed (StM+GSM)/Total



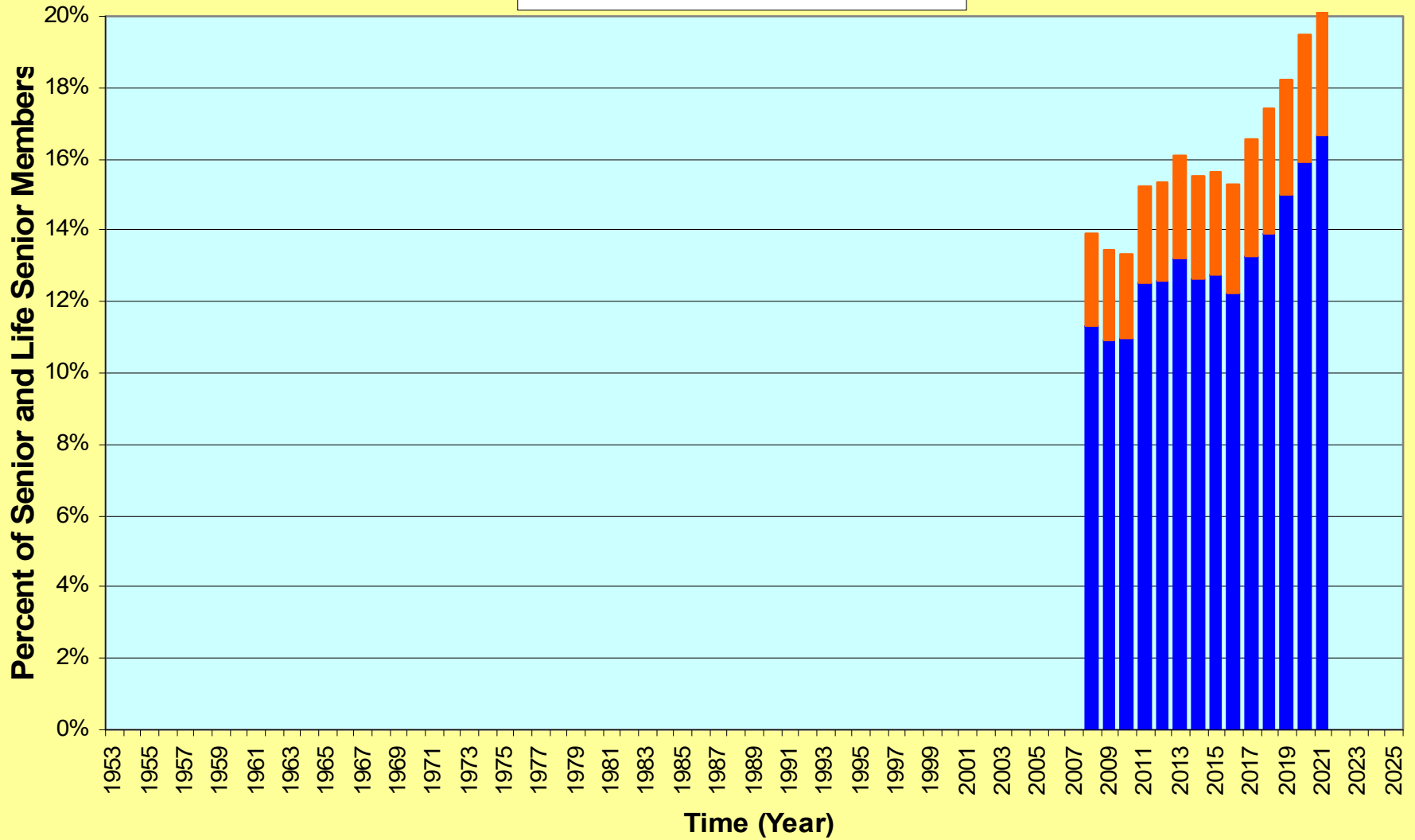
Percent of Fellows and Life Fellows / Total UFFC-S Members of the IEEE Ultrasonics, Ferroelectrics, and Frequency Control Society (UFFC-S) (Since 1953) - "0" values mean that data are not available for those years

■ Fellow (F/Total) ■ Life Fellow (LF/Total)



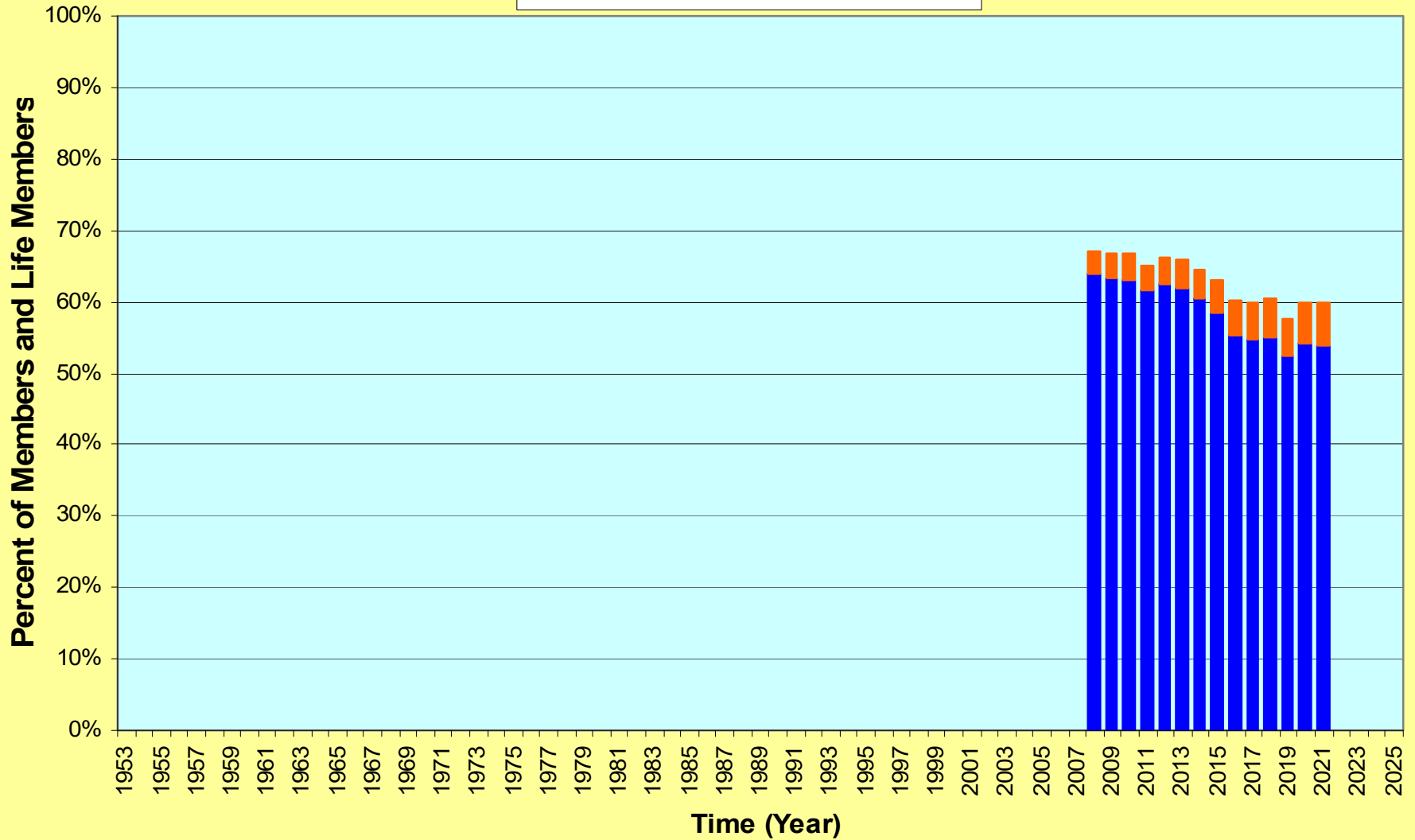
Percent of Senior and Life Senior Members / Total UFFC-S Members of the IEEE Ultrasonics, Ferroelectrics, and Frequency Control Society (UFFC-S) (Since 1953) - "0" values mean that data are not available for those years

■ Senior (SM/Total) ■ Life Senior (LS/Total)



Percent of Members and Life Members / Total UFFC-S Members of the IEEE Ultrasonics, Ferroelectrics, and Frequency Control Society (UFFC-S) (Since 1953) - "0" values mean that data are not available for those years

■ Member (M/Total) ■ Life Member (LM/Total)



Percent of Affiliate and Associate Members / Total UFFC-S Members of the IEEE Ultrasonics, Ferroelectrics, and Frequency Control Society (UFFC-S) (Since 1953) - "0" values mean that data are not available for those years

■ Affiliate (AF/Total) ■ Associate (AM/Total)

